

**MANNHART**

## OPERATING / TECHNICAL MANUAL

# Salad Dryers

MODEL SD-PE

MODEL SD-PS



Made in U.S.A.

**MANNHART**

MANNHART, INC.  
651 Industrial Boulevard  
Grapevine, Texas 76051  
Tel.: (817) 421-0100  
Fax: (817) 421-0246  
[www.mannhart.com](http://www.mannhart.com)



# Salad Dryers

Mannhart SD-PE / SD-PS

## TECHNICAL MANUAL FOR MANNHART SALAD DRYERS

### MODEL SD-PE & SD-PS

#### LITERATURE AND PARTS LIST

##### SD-PE

1. SD-PE LITERATURE
2. SD-PE BREAKDOWN
3. SD-PE PARTS DIAGRAM
4. SD-PE PARTS LIST

##### SD-PS

5. SD-PS LITERATURE
6. SD-PS BREAKDOWN
7. SD-PS PARTS DIAGRAM
8. SD-PS PARTS LIST

#### ELECTRICAL & OPERATING INSTRUCTIONS

9. ELECTRICAL WIRING DIAGRAM
10. OPERATING INSTRUCTIONS
11. CLEANING INSTRUCTIONS
12. BASKET FILLING INSTRUCTIONS
13. IMPORTANT NOTICE – FLOOR PLACEMENT

#### WARRANTY

14. WARRANTY INFORMATION



# MANNHART SALAD DRYER MODEL SD-PE



**“MAKES EVERY  
SALAD  
A WINNER!”**

**DRIES ONE CASE OF LETTUCE  
WITHIN MINUTES**

**FRESH, CRISP APPEARANCE OF SALAD**

**EXTENDED SHELF LIFE**

**SAVE 15% OR MORE ON SALAD DRESSING**



- ALL POLYETHYLENE, HEAVY-DUTY CONSTRUCTION, STAINLESS STEEL REINFORCED
- EASY TO REACH TIMER LOCATED AT TOP OF TUB WITH POWER CORD STORAGE
- STAINLESS STEEL MOTOR SPLASHGUARD PROTECTS FULLY SEALED MOTOR
- EASY TO LOAD POLYETHYLENE SPIN BASKET WITH HAND GRIPS
- WATER DRAINS THROUGH PVC EXTENSION TUBE DIRECTLY INTO FLOOR DRAIN OR CONTAINER UP TO 9” HIGH - NO SPLASHING
- EASY TO LOCK, HEAVY-DUTY CASTERS WITH BRAKES
- EASY TO CLEAN - NO HARD TO REACH AREAS
- ONE YEAR WARRANTY, PARTS & LABOR

**BUILT FROM THE GROUND UP!**

**MADE IN USA**



**MANNHART, INC.**  
651 Industrial Boulevard  
Grapevine, Texas 76051  
Tel (817) 421-0100  
Fax (817) 421-0246  
www.mannhart.com



MANNHART, INC.

651 Industrial Boulevard, Grapevine, Texas 76051

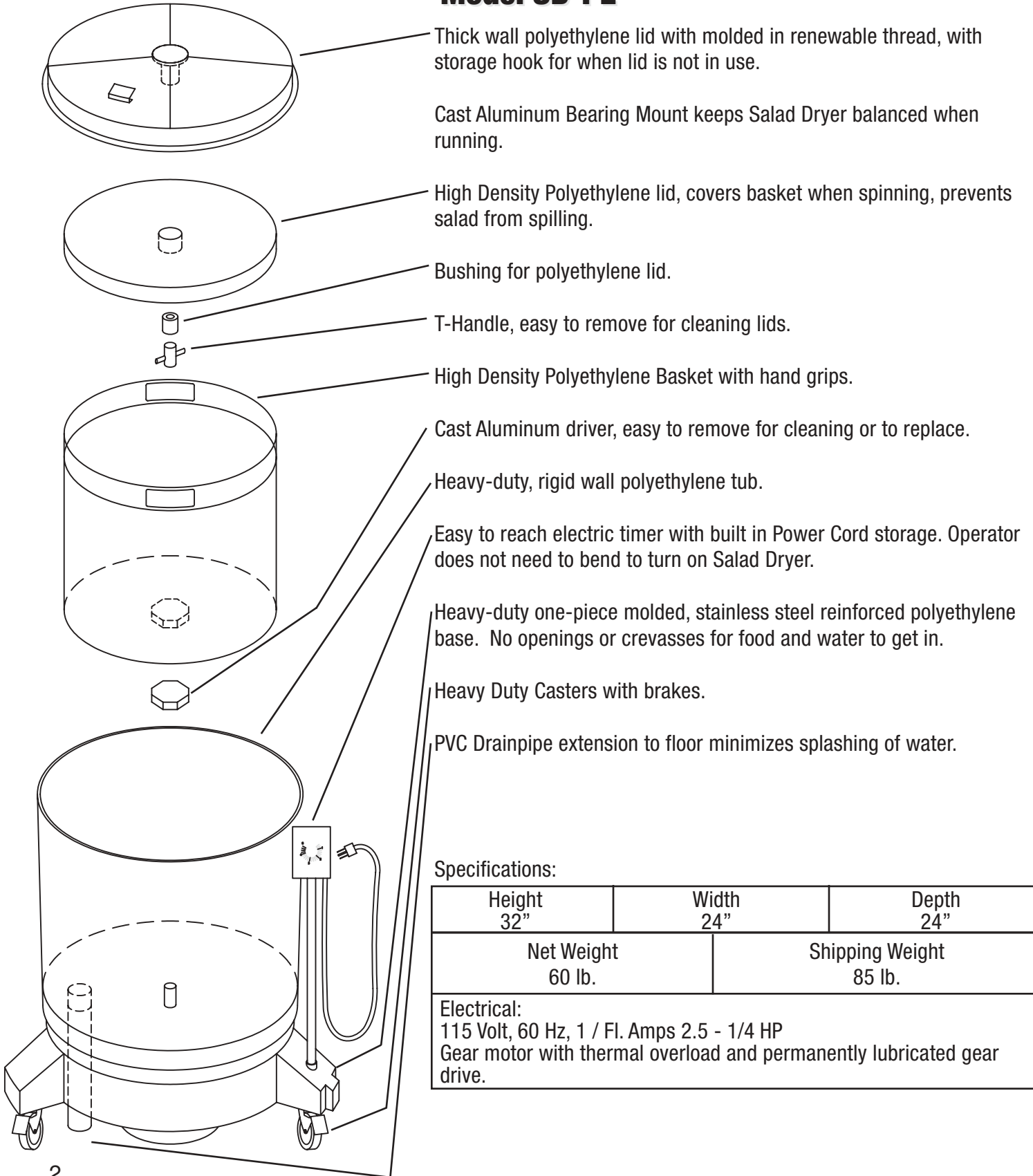
Phone (817) 421-0100

FAX (817) 421-0246

www.mannhart.com

# MANNHART SALAD DRYER

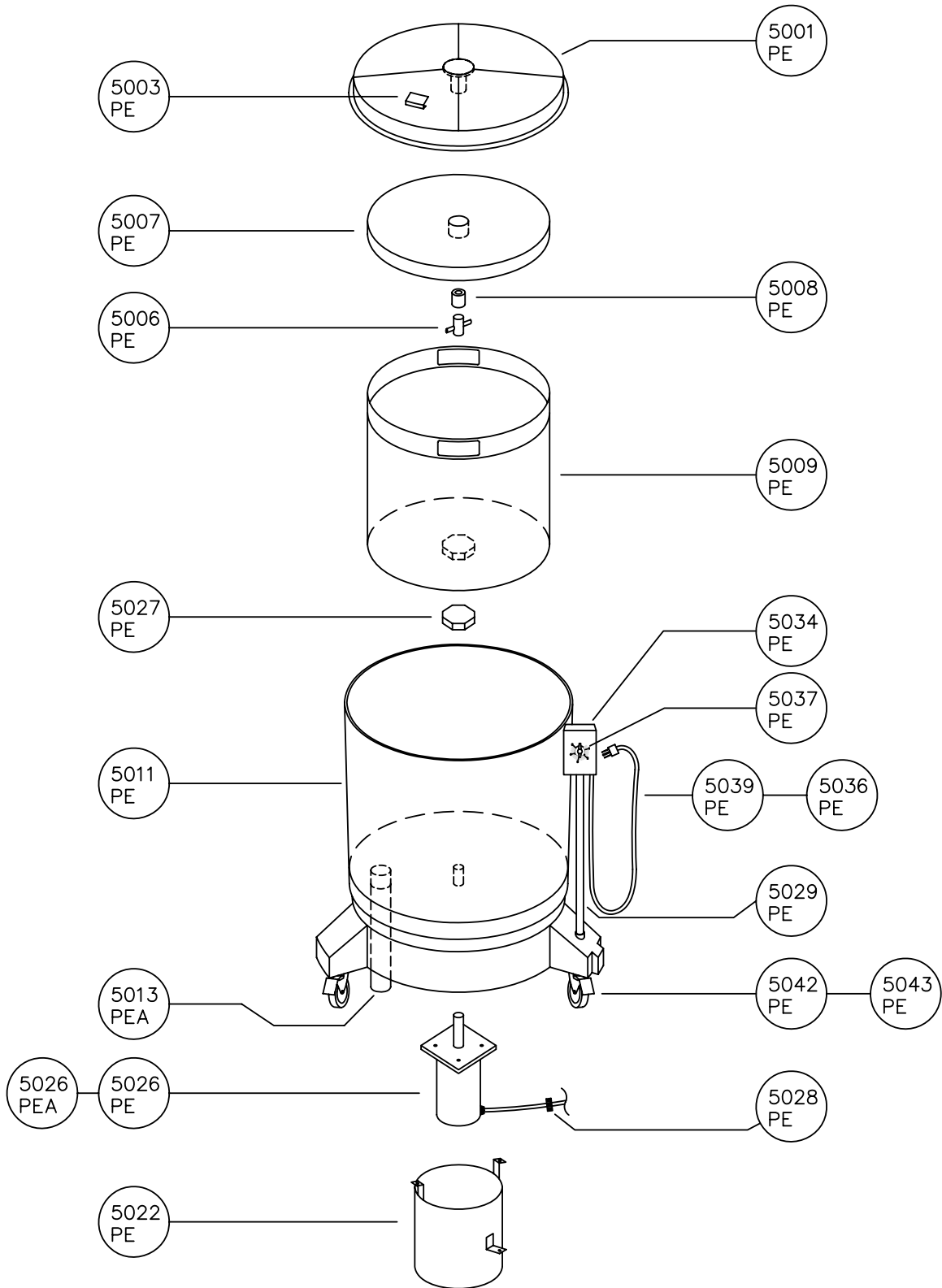
## Model SD-PE



**Specifications:**

Height 32"	Width 24"	Depth 24"
Net Weight 60 lb.		Shipping Weight 85 lb.
Electrical: 115 Volt, 60 Hz, 1 / Fl. Amps 2.5 - 1/4 HP Gear motor with thermal overload and permanently lubricated gear drive.		

# PARTS DIAGRAM FOR MANNHART SALAD DRYER SD-PE



DESCRIPTION:	DATE: <b>March 31, 2005</b>		PART NO.
	REV.		
EQUIPMENT:	MATERIAL:	REV.	DRAWING NO.
	SCALE:	REV.	



# Salad Dryers

## Mannhart SD-PE

### MANNHART SALAD DRYER, MODEL SD-PE PARTS LIST

PART #	DESCRIPTION	QUANTITY
5001-PE	OUTER TUB LID, POLYETHYLENE	1
5005-PE	BEARING MOUNT W/SCREWS, CAST ALUMINUM	1
5006-PE	T-HANDLE ASSEMBLY, STAINLESS STEEL	1
5007-PE	DRYER BASKET LID, POLYETHYLENE	1
5008-PE	DELKIN BUSHING FOR BASKET LID	1
5009-PE	DRYER BASKET WITH LID, POLYETHYLENE	1
5013A-PS	DRAIN PIPE EXTENSION HOSE, VINYL	1
5015-PE	RUBBER GROMMET FOR ELECTRICAL CONDUIT PIPE	1
5021-PE	MOTOR WATER DEFLECTOR, STAINLESS STEEL	1
5026-PE	GEAR MOTOR - 115/60/1 - 1/4 HP	1
5026-PEA	GEAR MOTOR - 230/60/1 - 1/4 HP	1
5026-PEB	HEXAGON BOLTS W/LOCKWASHER TO FASTEN MOTOR	4
5027-PE	OCTAGONAL DRIVER FOR GEARMOTOR	1
5028-PE	MOTOR SPLASHGUARD, STAINLESS STEEL	1
5029-PE	ELECTRICAL CONDUIT PIPE	1
5034-PE	ELECTRICAL TIMER BOX	1
5036-PE	CABLE RELIEVE BUSHING FOR POWER CORD	1
5037-PE	FIVE MINUTE ELECTRICAL TIMER	1
5039-PE	POWER SUPPLY CORD 14/3 W/MOLDED PLUG 115/60/1	1
5039-PEA	POWER SUPPLY CORD 14/3 W/MOLDED PLUG 230/60/1	1
5042-PE	CASTERS W/POSITIVE LOCKING MECHANISM	3



**MANNHART**

# SALAD DRYER

**MODEL SD-PS**

**DRIES ONE CASE OF LETTUCE  
WITHIN MINUTES**

**FRESH, CRISP APPEARANCE OF SALAD**

**EXTENDED SHELF LIFE**

**SAVES 15% OR MORE ON SALAD DRESSING**

**“MAKES EVERY  
SALAD  
A WINNER!”**



**BUILT FROM THE GROUND UP!**

**MADE IN USA**

- **STURDY POLYETHYLENE BASE-STAINLESS STEEL REINFORCED**
- **STAINLESS STEEL TUB & LID HEAVY 16 GA, HIGHLY POLISHED**
- **EASY TO REACH TIMER LOCATED AT TOP OF TUB WITH POWER CORD STORAGE**
- **STAINLESS STEEL MOTOR SPLASH-GUARD PROTECTS FULLY SEALED MOTOR**
- **EASY TO LOAD POLYETHYLENE SPIN BASKET WITH HAND GRIPS**
- **WATER DRAINS THROUGH PVC EXTENSION TUBE DIRECTLY INTO FLOOR DRAIN OR CONTAINER UP TO 9" HIGH - NO SPLASHING**
- **EASY TO LOCK, HEAVY-DUTY CASTERS WITH BRAKES**
- **EASY TO CLEAN - NO HARD TO REACH AREAS**
- **ONE YEAR WARRANTY, PARTS & LABOR**



**MANNHART**

**MANNHART, INC.**  
651 Industrial Boulevard  
Grapevine, Texas 76051  
Tel (817) 421-0100  
Fax (817) 421-0246  
www.mannhart.com

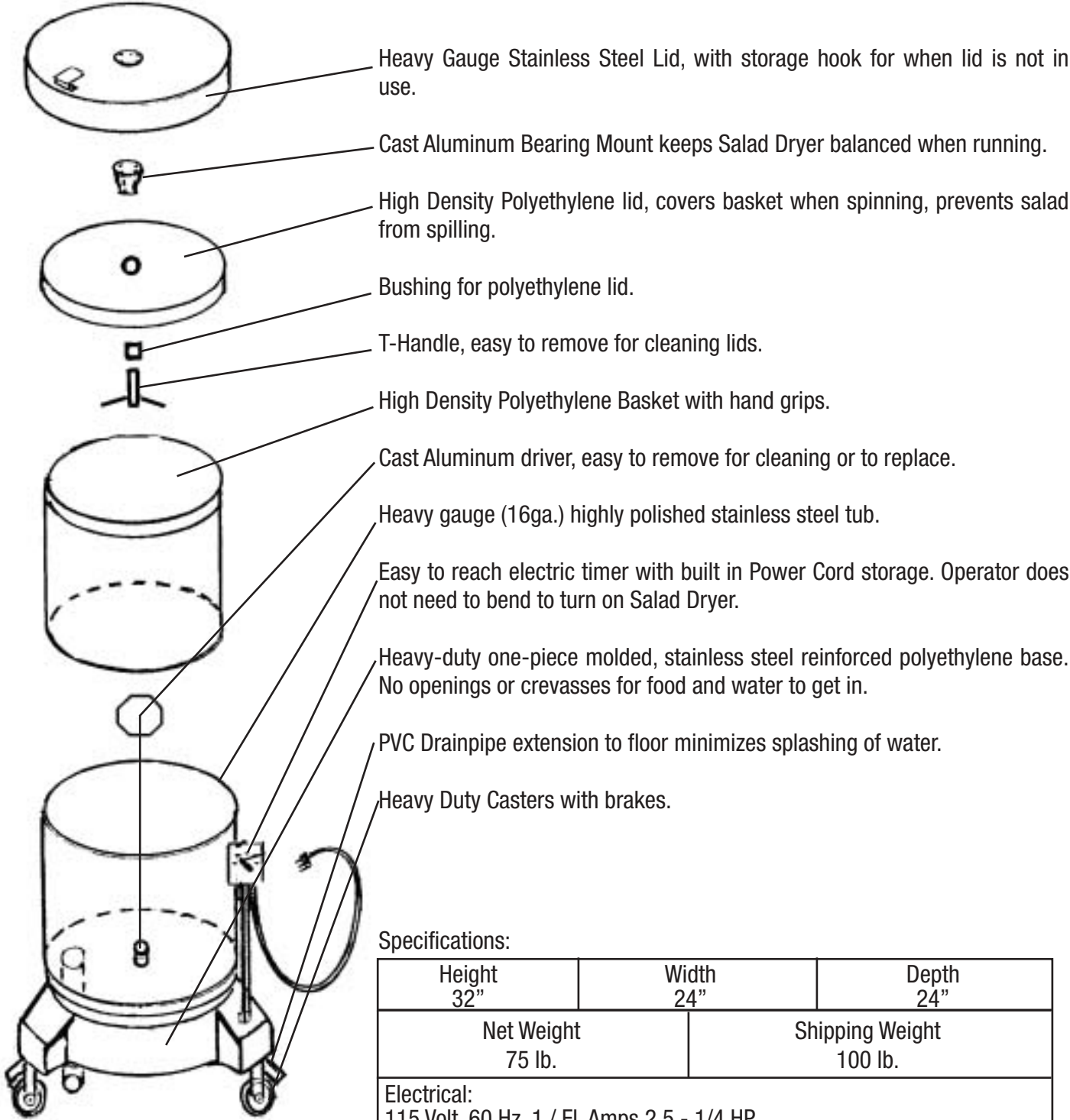


**MANNHART, INC.**

651 Industrial Boulevard, Grapevine, Texas 76051

Phone (817) 421-0100  
 Fax (817) 421-0246  
 www.mannhart.com

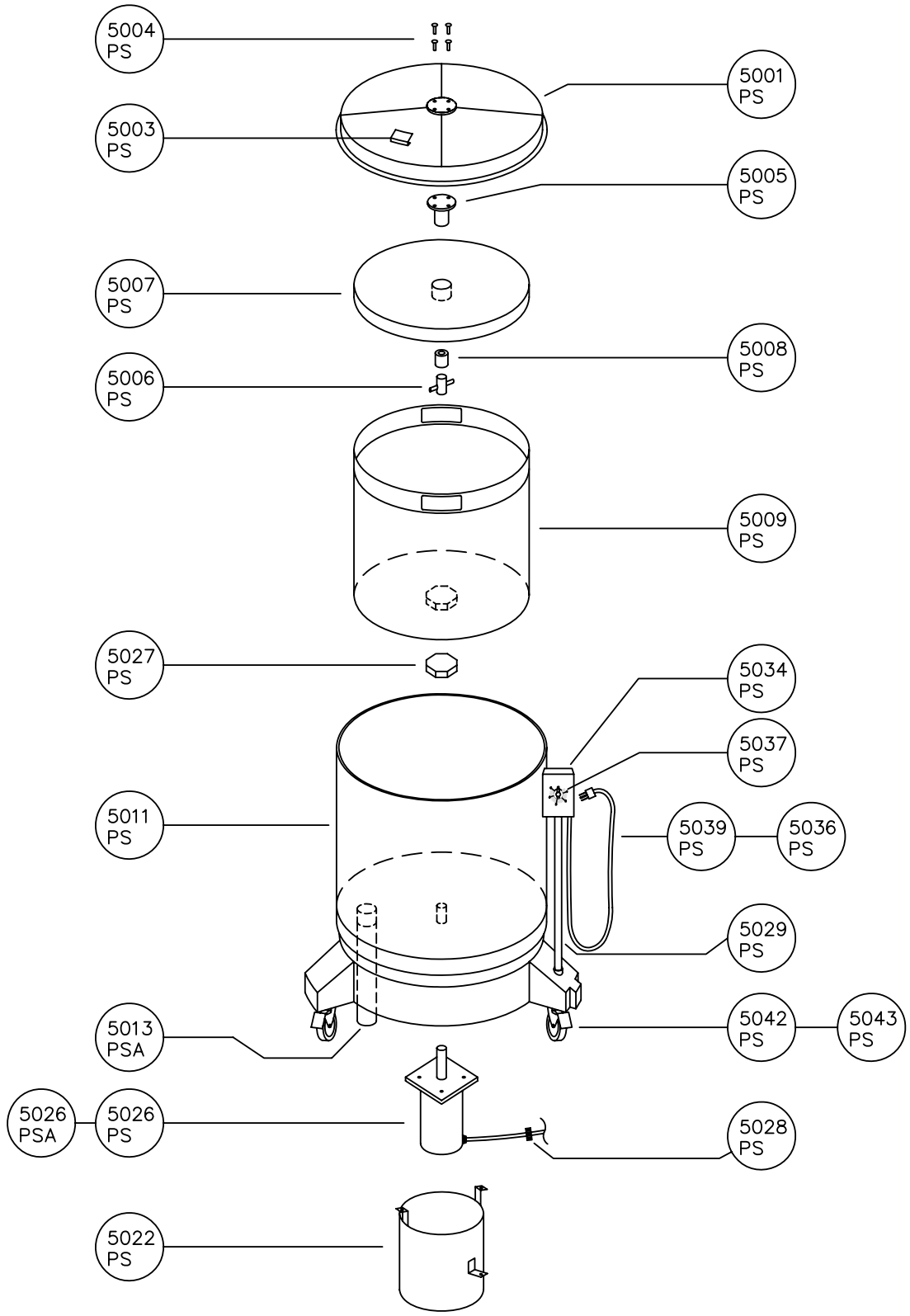
**MANNHART SALAD DRYER**  
**Model SD-PS**



Specifications:

Height 32"	Width 24"	Depth 24"
Net Weight 75 lb.		Shipping Weight 100 lb.
Electrical: 115 Volt, 60 Hz, 1 / Fl. Amps 2.5 - 1/4 HP Gear motor with thermal overload and permanently lubricated gear drive.		

# PARTS DIAGRAM FOR MANNHART SALAD DRYER SD-PS



DESCRIPTION:		DATE:	PART NO.
<b>SALAD DRYER SD-PS</b>		<b>March 31, 2005</b>	
EQUIPMENT:		REV.	DRAWING NO.
MATERIAL:		REV.	
SCALE:		REV.	



# Salad Dryers

## Mannhart SD-PS

### MANNHART SALAD DRYER, MODEL SD-PS PARTS LIST

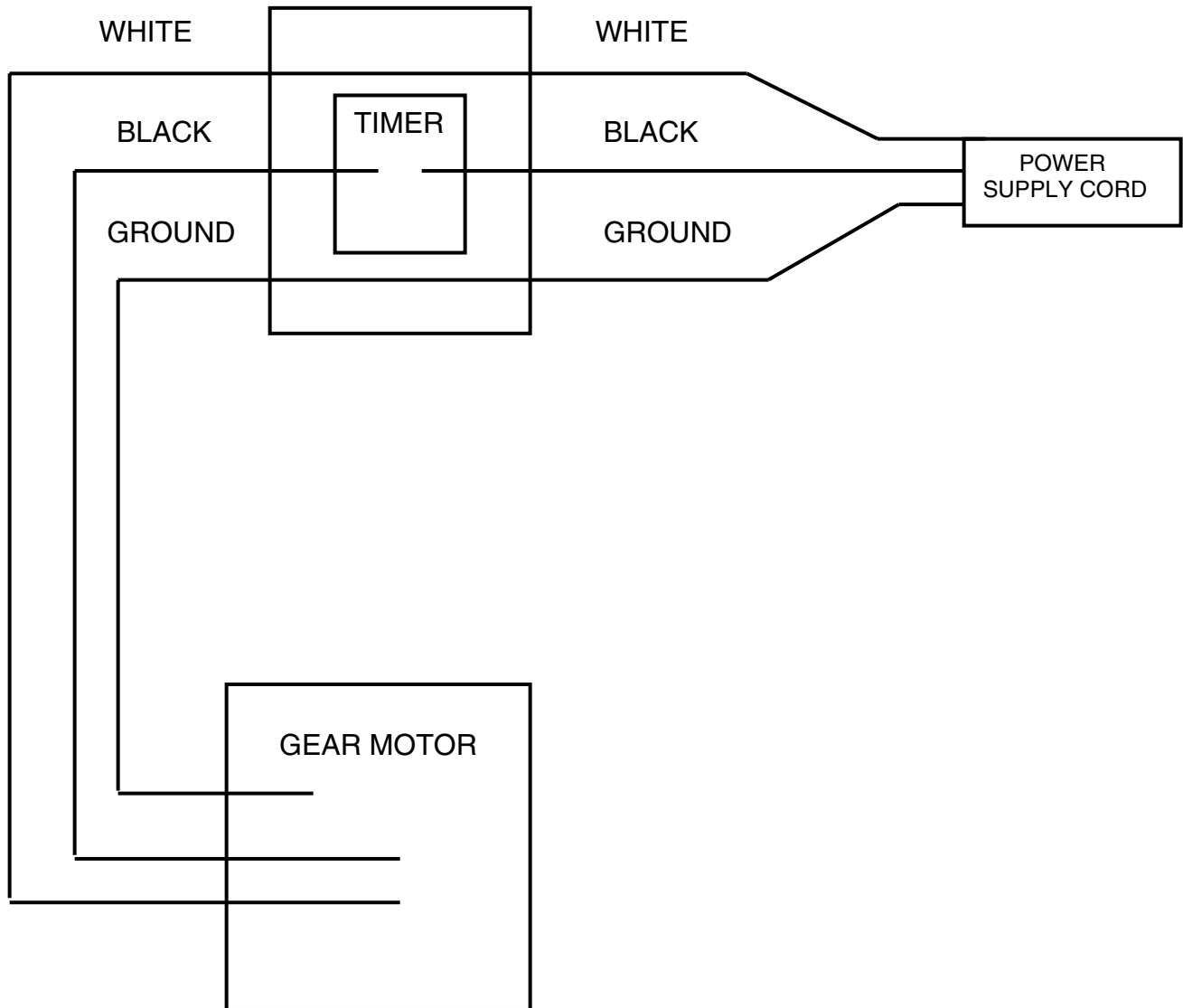
PART #	DESCRIPTION	QUANTITY
5000-PS	SALAD DRYER LID, COMPLETE, STAINLESS STEEL	1
5001-PS	STAINLESS STEEL LID ONLY	1
5004-PS	STAINLESS STEEL SCREWS FOR BEARING MOUNT	4
5005-PS	BEARING MOUNT W/SCREWS, CAST ALUMINUM	1
5006-PS	T-HANDLE ASSEMBLY, STAINLESS STEEL	1
5007-PS	DRYER BASKET LID, POLYETHYLENE	1
5008-PS	DELRIN BUSHING FOR BASKET LID	1
5009-PS	DRYER BASKET, POLYETHYLENE	1
5013A-PS	DRAIN PIPE EXTENSION HOSE, VINYL	1
5015-PS	RUBBER GROMMET FOR ELECTRICAL CONDUIT PIPE	1
5021-PS	MOTOR WATER DEFLECTOR, STAINLESS STEEL	1
5026-PS	GEAR MOTOR - 115/60/1 - 1/4 HP	1
5026-PSA	GEAR MOTOR - 230/60/1 - 1/4 HP	1
5026-PSB	HEXAGON BOLTS W/LOCKWASHER TO FASTEN MOTOR	4
5027-PS	OCTOGONAL DRIVER FOR GEARMOTOR	1
5029-PS	ELECTRICAL CONDUIT PIPE	1
5034-PS	ELECTRICAL TIMER BOX	1
5036-PS	CABLE RELIEVE BUSHING FOR POWER CORD	1
5037-PS	FIVE MINUTE ELECTRICAL TIMER	1
5039-PS	POWER SUPPLY CORD 14/3 W/MOLDED PLUG 115/60/1	1
5039-PSE	POWER SUPPLY CORD 14/3 W/MOLDED PLUG 230/60/1	1
5042-PS	CASTERS W/POSITIVE LOCKING MECHANISM	3
5043-PS	STAINLESS STEEL BOLT FOR CASTERS (4 PER CASTER)	4
5050-PS	SALAD DRYER BODY, STAINLESS STEEL	1



# Salad Dryers

Mannhart SD-PE / SD-PS

## ELECTRICAL WIRING DIAGRAM



Gear Motor:  $\frac{1}{4}$  HP, 115 Volt, 60 Hz, 1 Phase, 2.8 Amps

OR

$\frac{1}{4}$  HP, 230 Volt, 60 Hz, 1 Phase, 1.4 Amps



# Salad Dryers

## Mannhart SD-PE / SD-PS

### OPERATING INSTRUCTIONS

1. Position the Mannhart Salad dryer **on a solid, flat floor surface** over the floor drain or place a two (2) gallon capacity container under the drain tube.

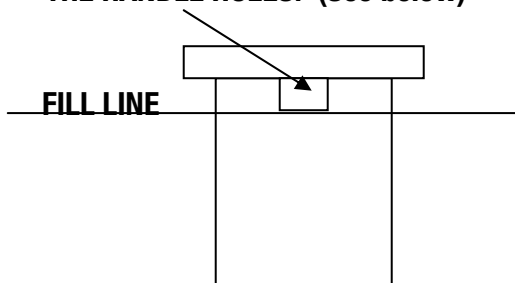
2. Secure machine into position by depressing the brake pedal on each caster.

3. Remove the stainless steel lid by slowly peeling it off on one side first for easy removal (P/E\* lid is attached to stainless lid). **DO NOT PULL OR FORCE LID OFF IN A QUICK MOTION.** Suspend the lid from the stainless steel salad dryer tub using the hook provided on the stainless steel lid.

4. Remove the perforated \*P/E spin basket and place in sink (\*see note below).

5. **LOAD WASHED LETTUCE/ SALAD INTO P/E SPIN BASKET TO BELOW HANDLE HOLES ONLY.** LET EXCESS WATER DRAIN FROM SALAD AND SPIN BASKET PRIOR TO LOADING P/E SPIN BASKET INTO SALAD DRYER.

**FILL SPIN BASKET ONLY TO BELOW THE HANDLE HOLES. (See below)**



**DO NOT OVERLOAD P/E SPIN BASKET.**

**OVERLOADING WILL CAUSE LID AND MOTOR FAILURE.**

6. Place loaded spin basket into salad dryer ensuring the octagon shaped recess in the P/E spin basket lines up with the metal octagon driver in the salad dryer.

7. Place the stainless steel lid onto the salad dryer, making sure it sits flush on top of the stainless steel tub.

Note: The P/E lid attached to the inside of the stainless steel lid is designed to hold the P/E spin basket in center of the salad dryer. Proper alignment will keep the salad dryer balanced and vibration free. Overloading will prevent the P/E lid from lining up properly with the P/E spin basket and will cause the salad dryer to wobble.

8. Turn the machine "ON" by rotating the knob on the timer clockwise choosing a one-to-five minute cycle. Generally, a two-to-three minute cycle is sufficient to dry a full load. Machine will turn off automatically.

9. When the timer cycle has ended, wait 10 seconds for P/E spin basket to stop rotating before removing the lid. Remove P/E spin basket from the machine.

10. For high volume operation, a second spin basket is recommended. Second basket can be filled with lettuce while the first basket is operating inside the salad dryer.

**VERY IMPORTANT!!!**

**\*\*\*DO NOT SPRAY WATER TOWARDS THE BOTTOM SIDE AND MOTOR AREA OF THE MANNHART SALAD DRYER AS THIS WILL CAUSE DAMAGE TO THE GEAR MOTOR AND ELECTRICAL PARTS.\*\*\***

\*Note: P/E= Polyethylene



# Salad Dryers

## Mannhart SD-PE / SD-PS

### CLEANING INSTRUCTIONS

Unplug the Mannhart Salad Dryer, wrapping the electrical cord on bracket mounted on the side of the tank. Position machine over the floor drain or place drainage container under drain pipe.

#### **INTERIOR SURFACE OF TANK**

1. Remove the remaining food debris with a sponge.
2. Wash the interior P/E spin basket with warm, detergent-sanitizing solution designed to clean stainless steel surfaces that are in contact with food.
3. Rinse with clean water. Air dry before placing on lid.

#### **EXTERIOR SURFACE OF TANK**

1. Use a clean, damp cloth to wipe the wash solution from surface. Allow to air dry.
2. Any commercial stainless steel polish can be used to shine clean surfaces.

#### **P/E SPIN BASKET AND LIDS**

1. Wash in warm, detergent-sanitizing solution designed for use with plastic materials in contact with food.
2. Rinse in clean water. Allow to air dry. **Never steam clean the P/E spin basket or lid.**

### **SUGGESTED**

### **LETTUCE / GREENS STORAGE INSTRUCTIONS**

---

Gently pour the produce into heavy duty plastic bags or rigid plastic containers with tight fitting lids. Place into refrigerated storage. Ideal storage temperatures range between 32 and 35 degrees Fahrenheit.

AVOID "PACKING" LETTUCE AND OTHER DELICATE PRODUCE TIGHTLY IN P/E SPIN BASKET. Position containers in refrigerator allowing for good air circulation around the storage container/bags. This will promote rapid chilling.



# BASKET FILLING INSTRUCTIONS

BEST RESULTS ARE ACHIEVED BY

FILLING BASKET **3/4 FULL!**

LOAD MUST BE DISTRIBUTED

**EVENLY IN BASKET!**

\*\*\*\*\*

NEVER FILL BASKET ABOVE  
HANDLE HOLES!



# Salad Dryers

Mannhart SD-PE / SD-PS

## IMPORTANT NOTICE!

SALAD DRYER MUST BE PLACED ON CONCRETE SURFACE NEAR FLOOR DRAIN TO ALLOW PROPER DRAINING.

FLOOR MATS WILL OBSTRUCT DRAINING ABILITY.

THE HEAVY WEIGHT OF THE LOADED SALAD DRYER MAY FORCE THE CASTERS TO SINK INTO THE FLOOR MAT, CAUSING OBSTRUCTION OF DRAINAGE RESULTING IN WATER BUILD-UP WHICH MAY CAUSE GEAR MOTOR FAILURE.

GEAR MOTOR FAILURE DUE TO WATER DAMAGE IS NOT COVERED UNDER WARRANTY!

THANK YOU.



# Salad Dryers

Mannhart SD-PE / SD-PS

## WARRANTY INFORMATION

**The end-user customer must call Mannhart directly for Warranty Authorization prior to arranging for a service repair company.**

**TELEPHONE NUMBER: (817) 421-0100**

99% of the time we are able to troubleshoot with the end-user over the phone and ship the replacement part directly to the store for fast and easy installation.

If a service repair company is required, Mannhart Inc. will authorize the service repair company of the end-user's choice to work on our equipment.

The original part being replaced must be returned to Mannhart for warranty inspection and final authorization.

Note: The complete Mannhart Warranty Information can be found on the warranty card that is shipped with every Mannhart Salad Dryer.

Thank you,

MANNHART, INC.



# MANNHART, INC.

651 INDUSTRIAL BOULEVARD

GRAPEVINE, TEXAS 76051

TELEPHONE: (817) 421-0100

FAX: (817) 421-0246

[www.mannhart.com](http://www.mannhart.com)